

## OKS 3200-N Mo<sub>x</sub> Active Gear Oil

### Oil that adds life to your gears



**Mo<sub>x</sub> - Active®**

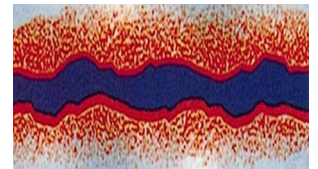
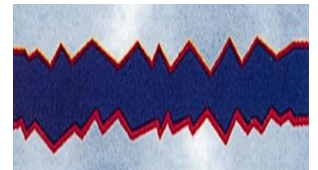
#### What is OKS 3200-N Mo<sub>x</sub> Active Gear Oil?

OKS 3200-N Mo<sub>x</sub> Active Gear oil is a third generation multi component complex oil. It has a special active additive called organic Molybdenum complex compound, which reduces the fatigue wear. This is apart from various other additives in the oil. OKS Mo<sub>x</sub> Active Gear oils are available at viscosity grades from ISO VG 150-680.

#### How does OKS 3200-N Mo<sub>x</sub> Active Gear Oil work?

It reduces fatigue wear, which undergo cyclic stress during operation.

- ❑ Mo<sub>x</sub> Active works quickly by establishing a protective strong pressure resistant lubricating film in between the meshing surface & remains there in spite of heavy loads or shocks.
- ❑ The load-carrying capacity improves with increasing pressure there by reducing the friction and wear considerably.
- ❑ Load per unit area comes down due to increase in contact area. Friction and heat generation comes down.



OKS 3200-N Mo<sub>x</sub> Active Gear Oil provides the following advantages:

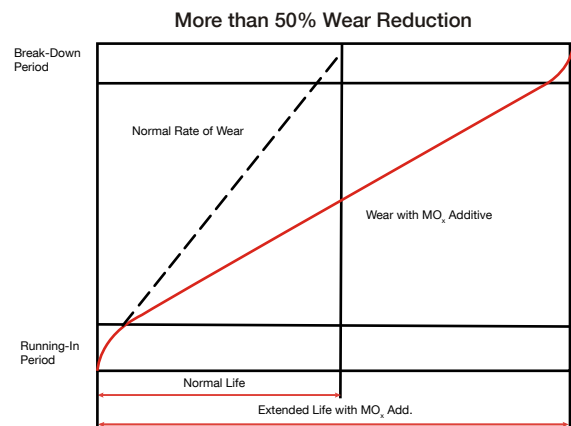
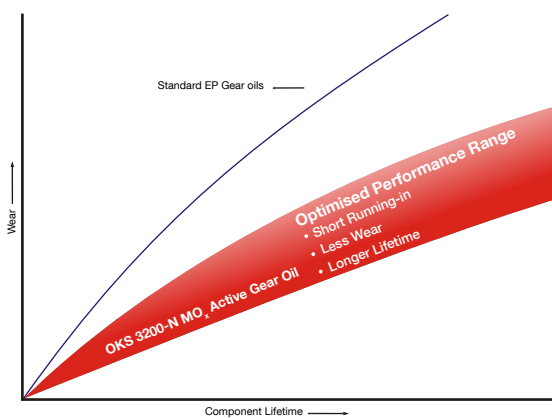
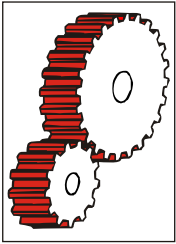
- Extended lifetime
- Minimum wear
- Reduced friction
- Highest load carrying capacity
- Extremely short running-in period
- Less downtime
- Repair of micro pitting

## Intelligent lubricant technology from OKS

### Component Lifetime Extension

OKS 3200-N Mo<sub>x</sub> Active Gear oil is capable of doing a "Running-in" instead of "Wearing-in" thereby extending the life of the oil and also helping the internal guts of the gearbox.

**Note:** Customers have observed reduction in operating temperature of up to 8-10°C after using OKS 3200-N Mo<sub>x</sub> Active Gear Oil



### How to switch to Mo<sub>x</sub> Active Gear Oils?

Mo<sub>x</sub> Active gear oils are miscible with conventional EP gear oils based on mineral oil and synthetic hydrocarbons - SHC. To obtain optimum performance, we recommend flushing the gearbox so that it is free of sludge or any residue. Our service team will guide you during the changeover period and will be pleased to support you on any further questions.

